

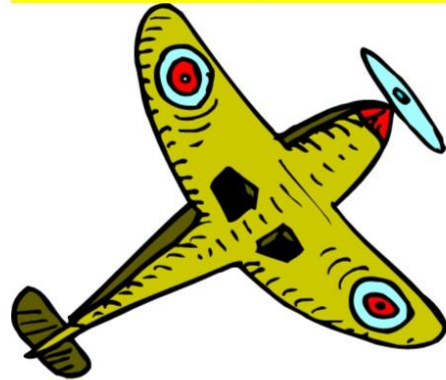
### Closed Syllable



- ends in a consonant
- the vowel is short

## S Y L L A B L E R E V I E W

### Silent-e Syllable



- ends in a silent e
- the vowel is long

### Open Syllable

- ends in a vowel
- the vowel is long

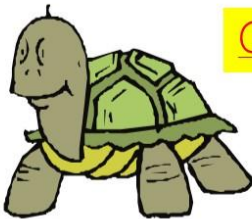


### r-Controlled Syllable



- has at least 1 vowel followed by r

### Consonant-le Syllable



- always found at the end of a word
- to find this syllable, count back 3

### Vowel Team Syllable

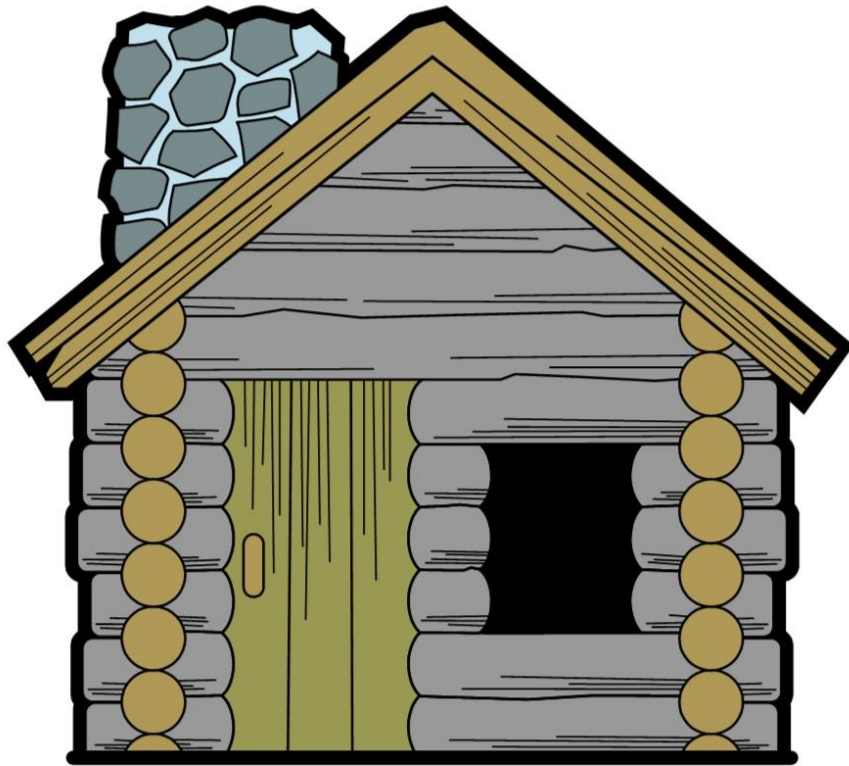


- has at least 2 vowels that make one sound

hhb '10

# Closed Syllable

- . ends in a consonant
- . the vowel is short



căb/în

# Open Syllable

- . ends in a vowel
- . the vowel is long



hē/rō

# r-Controlled Syllable

- . has at least one vowel followed by r
- . the vowel is neither long nor short

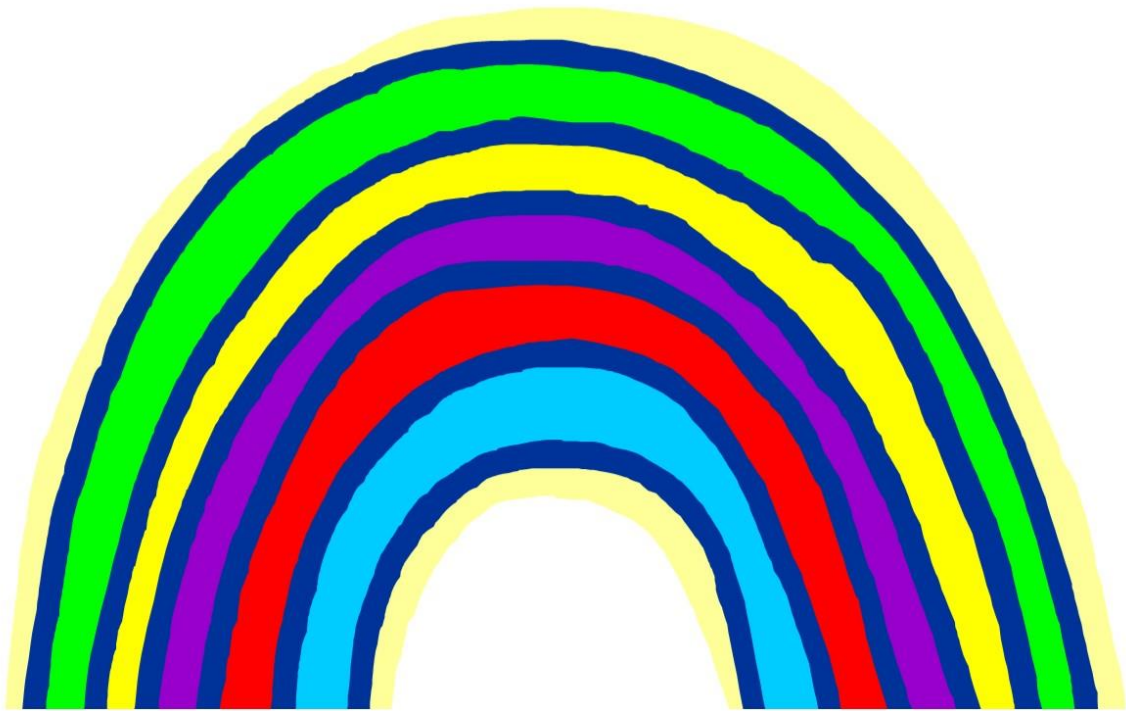


star



# Vowel Team Syllable

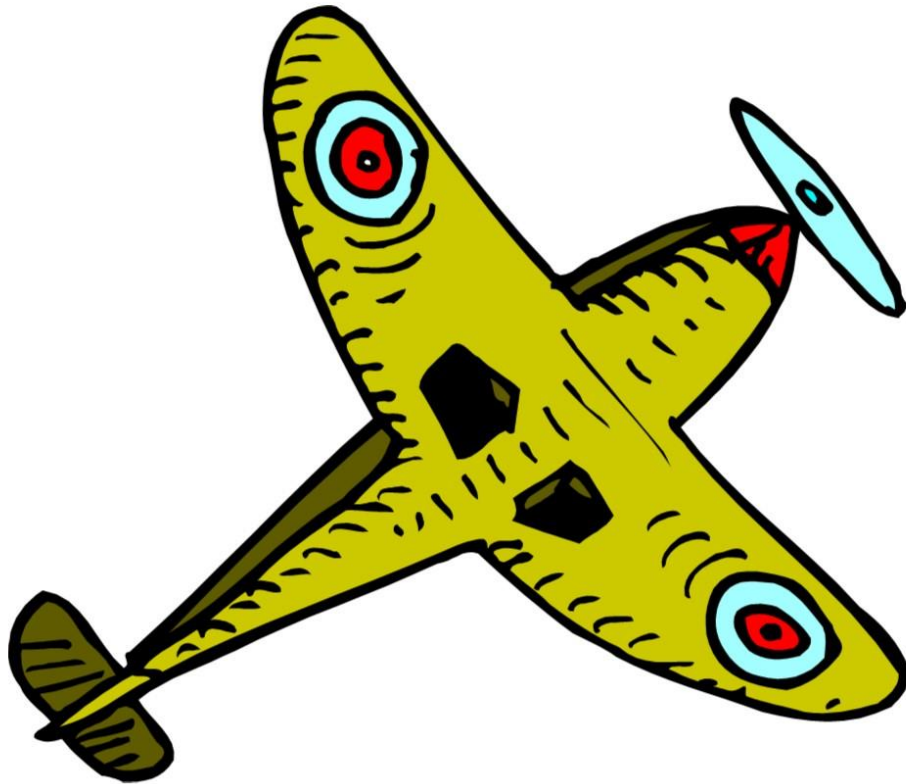
- . has at least two vowels together that make one sound



rain/bow

# Silent-e Syllable

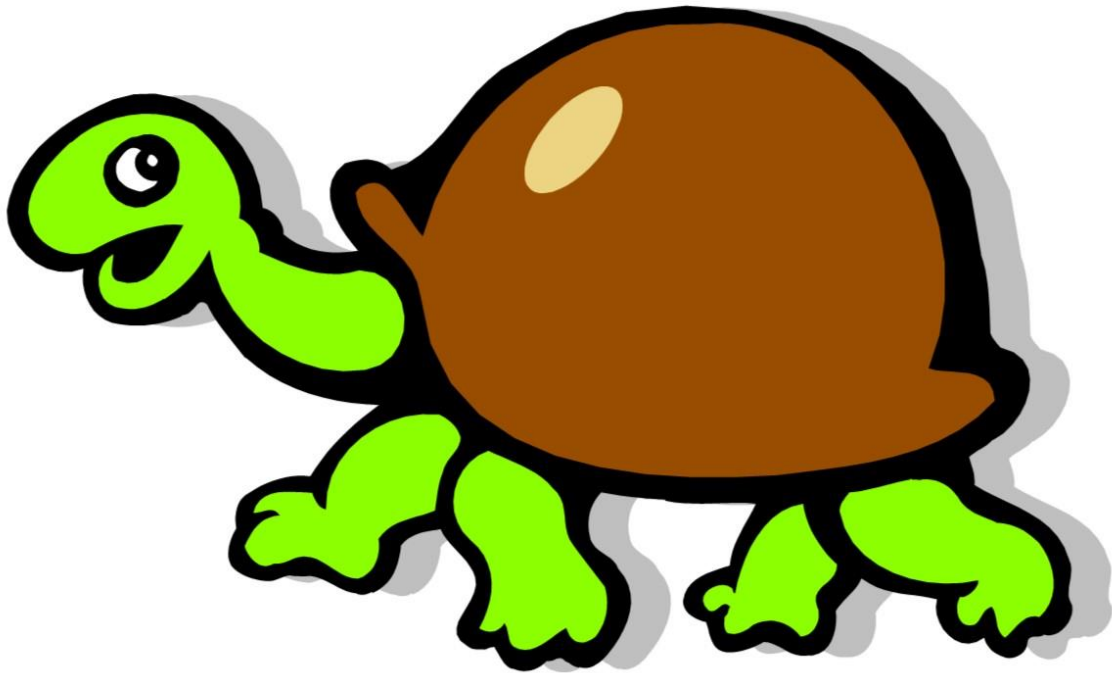
- . ends in a silent e
- . the vowel is long



plāne

# Consonant-le Syllable

- . this syllable is found at the end of a word
- . to find this syllable, count back 3



tur/~~tle~~

1 2 3 ←