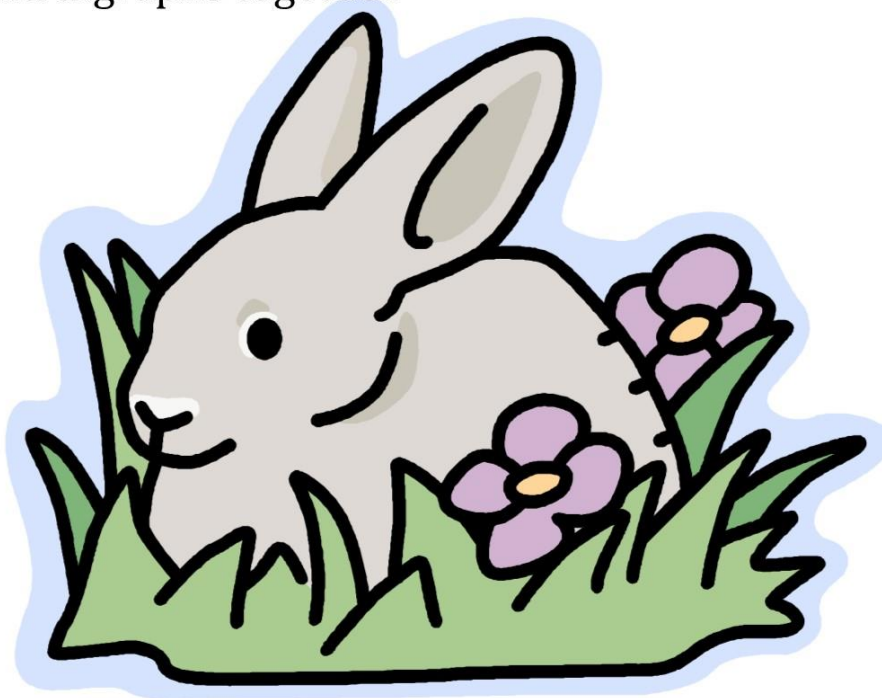


VC/CV Syllable Division

When two consonants come between two vowels, divide between the consonants; if more than 2 consonants come between the vowels, divide keeping blends and digraphs together.

răb / bĭt
v c c v

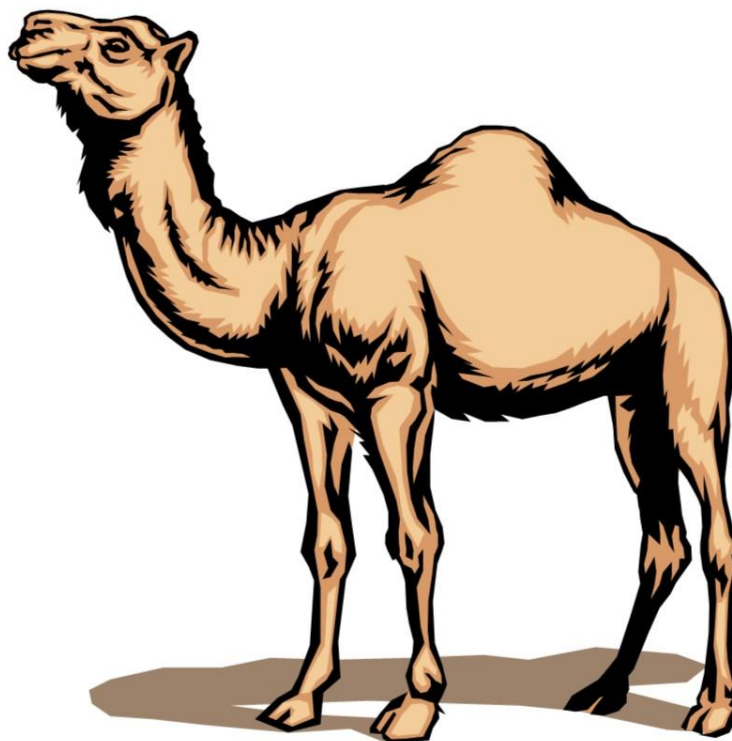


VC/V Syllable Division

part 2

If the word doesn't make sense after dividing after the vowel, then your second choice is dividing after the consonant, which makes the vowel short.

căm / el
v c v



V/CV Syllable Division

part 1

When one consonant comes between two vowels, first divide after the vowel, which makes it long.

tī / ger
v c v



V/V Syllable Division

When two vowels are together, divide between the two vowels, particularly if the two vowels do not form a vowel team; this will make the first vowel long.



lī / ōn
v v